

Product Guide
Assembly Instruction
Use and Maintenance

Please save this guide for future reference. We advise that you keep a copy with the play structure and keep a copy on file for future reference.

This product is intended for indoor use only.



Contact Information:

Childs Play
131 Yorktown
Dallas, Tx. 75208
Phone: 214.761.1992
Toll Free: 1.800.447.8375
Fax Toll Free : 1.800.692.0042
email: mail@childsplay1.com
Web Site: www.chidsplay1.com

SL1000 - SL2000 Step Play and Slide



Straight Step, Play and Slide SL2000

Use only under direct adult supervision.



Warning: This product is intended for use by children of immature judgment; therefore

Adult Supervision is required at all times.



Warning: Remove hood and neck drawstrings from children's clothing before children play on structure. Remove scarves and mittens connected through the sleeves.



Warning: Choking Hazard

Assembly hardware may contain small parts. **Adult assembly required.**

Product Guide
Assembly Instruction
Use and Maintenance
continued

Please save this guide for future reference. We advise that you keep a copy with the play structure and keep a copy on file for future reference.

This product is intended for indoor use only.



Contact Information:

Childs Play
131 Yorktown
Dallas, Tx. 75208
Phone: 214.761.1992
Toll Free: 1.800.447.8375
Fax Toll Free : 1.800.692.0042
email: mail@childsplay1.com
Web Site: www.childsplay1.com

SL1000 - SL2000 Step Play and Slide

Contents

Thank you for choosing our Step, Play and Slide. Before starting any assembly and use of the structure please thoroughly **read this guide!**

First and foremost please make sure you understand all the safety information that is included with the guide.

All component parts are already assembled and no tools will be required. Please follow all instructions as they are very important for the correct installation and maintenance of the play structure.

We also have add on components that allow you to make your structure larger. Go to www.childsplay1.com for more information.

Proper care and maintenance will extend the life of your Step, Play and Slide.

If you have any questions, please call customer support:
1.800.447.8375

or

Email
mail@childsplay1.com

Contents:

- Page 1 - Cover
- Page 2 - Contents Index
- Page 3 - Safety and Warnings
- Page 4 - Parts and section list
- Page 5 - Assembly Instructions
- Page 6 - Maintenance
 - Cleaning
 - General Information

SL1000 - SL2000 Step Play and Slide



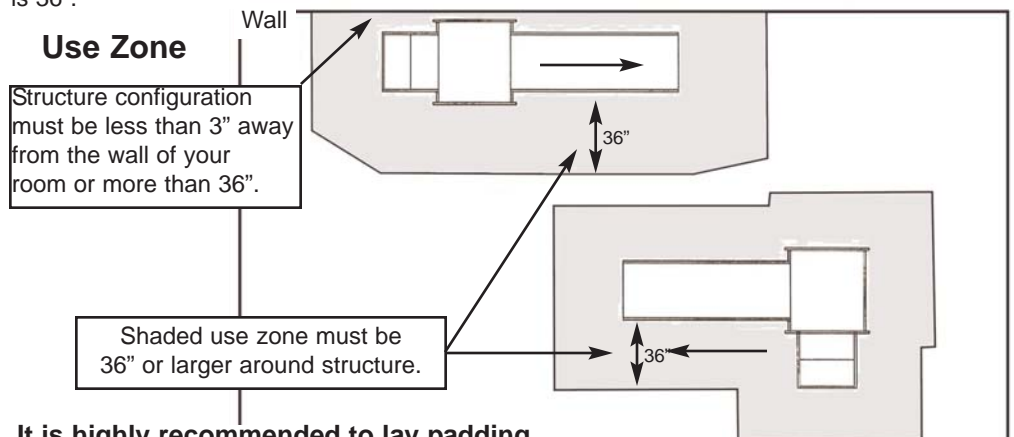
For Your Safety

Warnings

Failure to follow warnings and assembly instructions could result in serious injury or death.

- * This guide contains important information. Please save this guide for future reference. We advise that you keep a copy with the play structure and keep a copy on file for future reference
- * This product is intended for use by children of immature judgment; therefore adult supervision is required at all times. **It is highly recommended to lay padding around structure to the width of the use zone. Not providing a padded surface may result in injuries.** Remove hood and neck drawstrings from children's clothing before children play on structure. Remove scarves and mittens connected through the sleeves.
- * The Step, Play and Slide is appropriate for for ages 18 months to 36 months.
- * Children should not be present during set up of structure.
- * When the structure is to be used by the younger children, the slide area will require most of the adult supervision. A gate is available for purchase and can easily be put at the top of the slide to restrict access when sufficient supervision cannot be given. There is also a gate available for the stair entrance to restrict access to the platform.
- * Do not put slide closer than 36" to another entrance, platform or wall.
- * Do not take apart or move slide while children are present.
- * Always assemble the structure in a pattern that is recommended. We cannot take responsibility for free-form structures or additions to the structure that is not ours.
- * Test and make sure all connections of pieces are secure and stable before allowing children on structure.
- * Do not place anything on the top platform which children could use to climb over the sides.
- * The platform can carry a weight of 400 pounds. However use of the structure must be restricted to the age group it is intended for.

In accordance with ASTM F2373 Section 11, any play structure configuration must be less than 3" away from the wall of your room or more than 36". This is to avoid dangerous entrapment gaps and to provide a use zone around the structure. Below is a example of use zones. Use zones are allowed to overlap as long as the minimum distance between structures is 36".



It is highly recommended to lay padding around structure to the width of the use zone. Not providing a padded surface may result in injuries.

Product Guide Assembly Instruction Use and Maintenance

continued

Please save this guide for future reference. We advise that you keep a copy with the play structure and keep a copy on file for future reference.

This product is intended for indoor use only.



Contact Information:

Childs Play
131 Yorktown
Dallas, Tx. 75208
Phone: 214.761.1992
Toll Free: 1.800.447.8375
Fax Toll Free : 1.800.692.0042
email: mail@childsplay1.com
Web Site: www.childsplay1.com

Product Guide Assembly Instruction Use and Maintenance

continued

Please save this guide for future reference. We advise that you keep a copy with the play structure and keep a copy on file for future reference.

This product is intended for indoor use only.



Contact Information:

Childs Play
131 Yorktown
Dallas, Tx. 75208
Phone: 214.761.1992
Toll Free: 1.800.447.8375
Fax Toll Free : 1.800.692.0042
email: mail@childsplay1.com
Web Site: www.childsplay1.com

Component pieces for the Corner Step, Play and Slide SL1000



1 - Tower SL5555-C



1 - Steps SL4444



1 - Slide SL3333

Component pieces for the Straight Step, Play and Slide SL2000



1 - Tower SL5555-ST



1 - Steps SL4444



1 - Slide SL3333

We recommend having 2 people assemble this product.

There are no tools required to assemble your Step, Play and Slide.

1 - Determine where you wish to place the structure. Keeping in mind that you will need a Use Zone of 36' around the structure.

See pg. 3 for complete details.

2 - Remove the sections from the shipping containers.

3 - Lay parts out in approximately the shape of the structure. next page

4 - Inspect all parts for damage. Do not use if you see damage present. Contact our customer service.

5 - Place tower section where you want it to be. Keep in mind to face the connector holes in tower the right direction.

6 - Take stair or slide section and lift up and slide connectors tabs into connector holes. Push down firmly, repeat process with other section.

Product Guide
 Assembly Instruction
 Use and Maintenance
 continued

Please save this guide for future reference. We advise that you keep a copy with the play structure and keep a copy on file for future reference.

This product is intended for indoor use only.

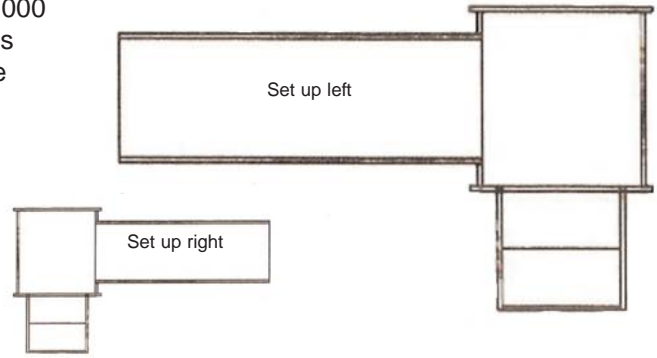


Contact Information:

Childs Play
 131 Yorktown
 Dallas, Tx. 75208
 Phone: 214.761.1992
 Toll Free: 1.800.447.8375
 Fax Toll Free : 1.800.692.0042
 email: mail@childsplay1.com
 Web Site: www.childsplay1.com

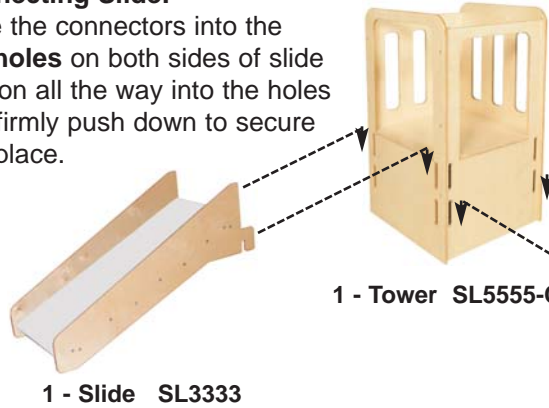
SL1000 Step Play and Slide

You can set up the SL1000 Structure in two ways as shown. Just reverse the slide and stair sections.



Connecting Slide:

Slide the connectors into the **top holes** on both sides of slide section all the way into the holes and firmly push down to secure into place.

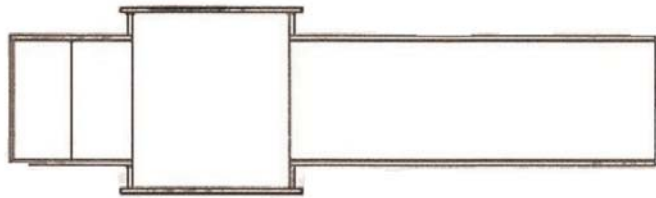


Connecting Stair:

Slide the connectors into the **bottom holes** on both sides of stair section all the way in and firmly push down to secure into place.

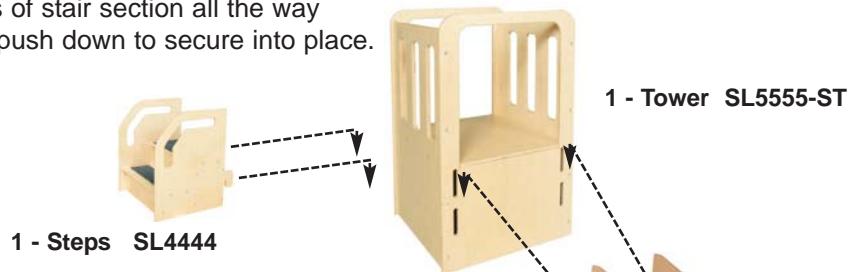


SL2000 Step Play and Slide



Connecting Stair:

Slide the connectors into the **bottom holes** on both sides of stair section all the way in and firmly push down to secure into place.



Connecting Slide:

Slide the connectors into the **top holes** on both sides of slide section all the way into the holes and firmly push down to secure into place.



Product Guide Assembly Instruction Use and Maintenance

continued

Please save this guide for future reference. We advise that you keep a copy with the play structure and keep a copy on file for future reference.

This product is intended for indoor use only.



Contact Information:

Childs Play
131 Yorktown
Dallas, Tx. 75208
Phone: 214.761.1992
Toll Free: 1.800.447.8375
Fax Toll Free : 1.800.692.0042
email: mail@childsplay1.com
Web Site: www.childsplay1.com

Maintenance:

Make a routine inspection daily of the step, play and slide for any cracks, loose parts and fastener's or missing parts.

Every 1 to 3 months unlock all components that make up you structure and check that the connectors are all in good shape with no cracks or other physical damage.

Once a year perform a thorough safety inspection of all components. If structure is subject to heavy use increase frequency of inspections and maintenance.

If any condition develops which might make operation unsafe remove the product from operation immediately.

Modifications:

We are not responsible for any modifications made by customers to our products, without our supervision, testing, and evaluation.

Cleaning:

You can wash your structure using a mild soap and water only.

Do not use too much water and do not let water accumulate or puddle on any of the wood parts. Remember wood and water naturally do not mix. Always use a non-toxic cleaner.

If storing the structure, it must be stored in a dry place away from moisture and water.

Cleaning Carpets:

Vacuum carpets frequently. If you need to wash them, do so with a non-toxic carpet cleaner. **Do not use water to clean the carpet.** This will result in the water eventually be soaked into the wood and may cause damage to the structure.

Ordering Parts:

To order replacement parts contact our customer support center. For add on expanding pieces contact your dealer or our customer service department.

Use only Childs Play parts and add on pieces.



Warning: This product is intended for use by children of immature judgment; therefore

Adult Supervision is required at all times.



Warning: Remove hood and neck drawstrings from children's clothing before children play on structure. Remove scarves and mittens connected through the sleeves.



Warning: Choking Hazard

Assembly hardware may contain small parts. **Adult assembly required.**